

**Anti-Complement C5 Reference Antibody (ravulizumab)
Recombinant Antibody
Catalog # APR10082****Specification**

Anti-Complement C5 Reference Antibody (ravulizumab) - Product Information

| | |
|-------------------|----------------------------|
| Application | FC, Kinetics, Animal Model |
| Primary Accession | P01031 |
| Reactivity | Human, Mouse |
| Clonality | Monoclonal |
| Isotype | IgG2SA |
| Calculated MW | 145.8 KDa |

Anti-Complement C5 Reference Antibody (ravulizumab) - Additional Information**Target/Specificity**

Complement C5

Endotoxin

< 0.001EU/ µg,determined by LAL method.

Conjugation

Unconjugated

Expression system

CHO Cell

Format

Purified monoclonal antibody supplied in PBS, pH6.0, without preservative.This antibody is purified through a protein A column.

Anti-Complement C5 Reference Antibody (ravulizumab) - Protein Information**Name** C5 {ECO:0000303|PubMed:1984448, ECO:0000312|HGNC:HGNC:1331}**Function**

Precursor of the C5a anaphylatoxin and complement C5b components of the complement pathways, which consist in a cascade of proteins that leads to phagocytosis and breakdown of pathogens and signaling that strengthens the adaptive immune system (PubMed:12878586, PubMed:18204047, PubMed:30643019, PubMed:6554279). Activated downstream of classical, alternative, lectin and GZMK complement pathways (PubMed:12878586, PubMed:18204047, PubMed:30643019, PubMed:6554279).

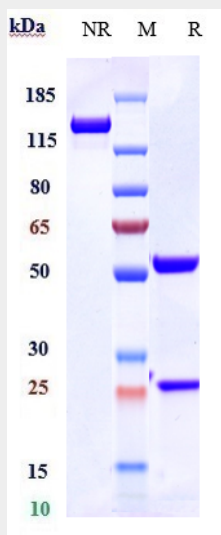
Cellular Location

Secreted. [C5a anaphylatoxin]: Secreted

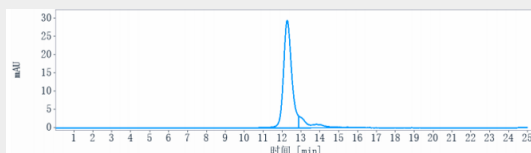
Anti-Complement C5 Reference Antibody (ravulizumab) - Protocols

Provided below are standard protocols that you may find useful for product applications.

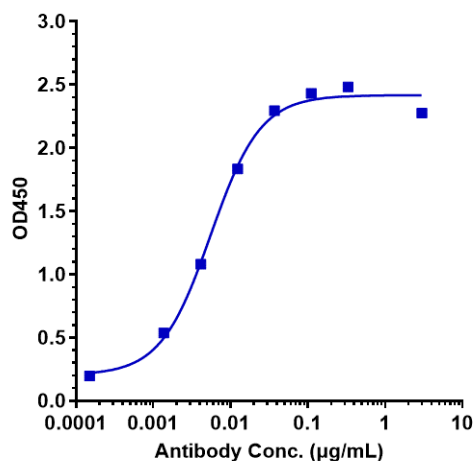
- [Western Blot](#)
- [Blocking Peptides](#)
- [Dot Blot](#)
- [Immunohistochemistry](#)
- [Immunofluorescence](#)
- [Immunoprecipitation](#)
- [Flow Cytometry](#)
- [Cell Culture](#)

Anti-Complement C5 Reference Antibody (ravulizumab) - Images

Anti-Complement C5 Reference Antibody (ravulizumab) on SDS-PAGE under reducing (R) condition. The gel was stained with Coomassie Blue. The purity of the protein is greater than 95%



The purity of Anti-Complement C5 Reference Antibody (ravulizumab) is more than 98.96%, determined by SEC-HPLC.



Immobilized human C5 His at 2 µg/mL can bind Anti-Complement C5 Reference Antibody (ravulizumab) $EC_{50}=0.00552$ µg/mL